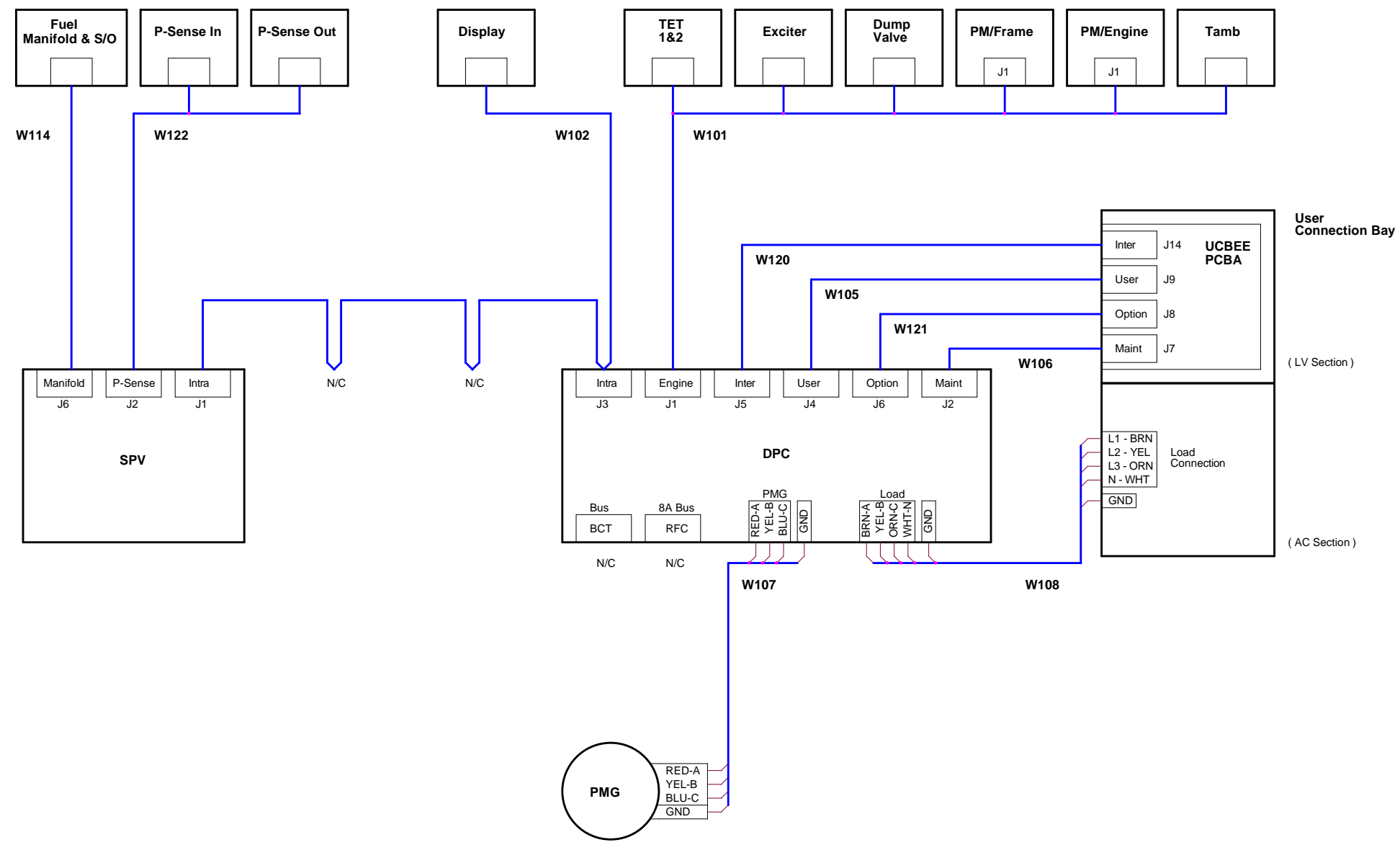


**NOTICE**  
 THIS DOCUMENT CONTAINS INFORMATION WHICH IS BOTH CONFIDENTIAL AND PROPRIETARY TO CAPSTONE TURBINE CORP. NEITHER THIS DOCUMENT NOR THE INFORMATION CONTAINED HEREIN SHALL BE COPIED, DISCLOSED TO OTHERS OR USED FOR ANY PURPOSES BEYOND THE SPECIFIC PURPOSE FOR WHICH THIS WAS DELIVERED WITHOUT THE EXPRESS WRITTEN PERMISSION OF CAPSTONE TURBINE CORPORATION - ALL RIGHTS RESERVED

REVISIONS			
LTR	DESCRIPTION	DATE	APPROVED
A	PILOT RELEASE	8-28-01	K. Keller

REFUSED



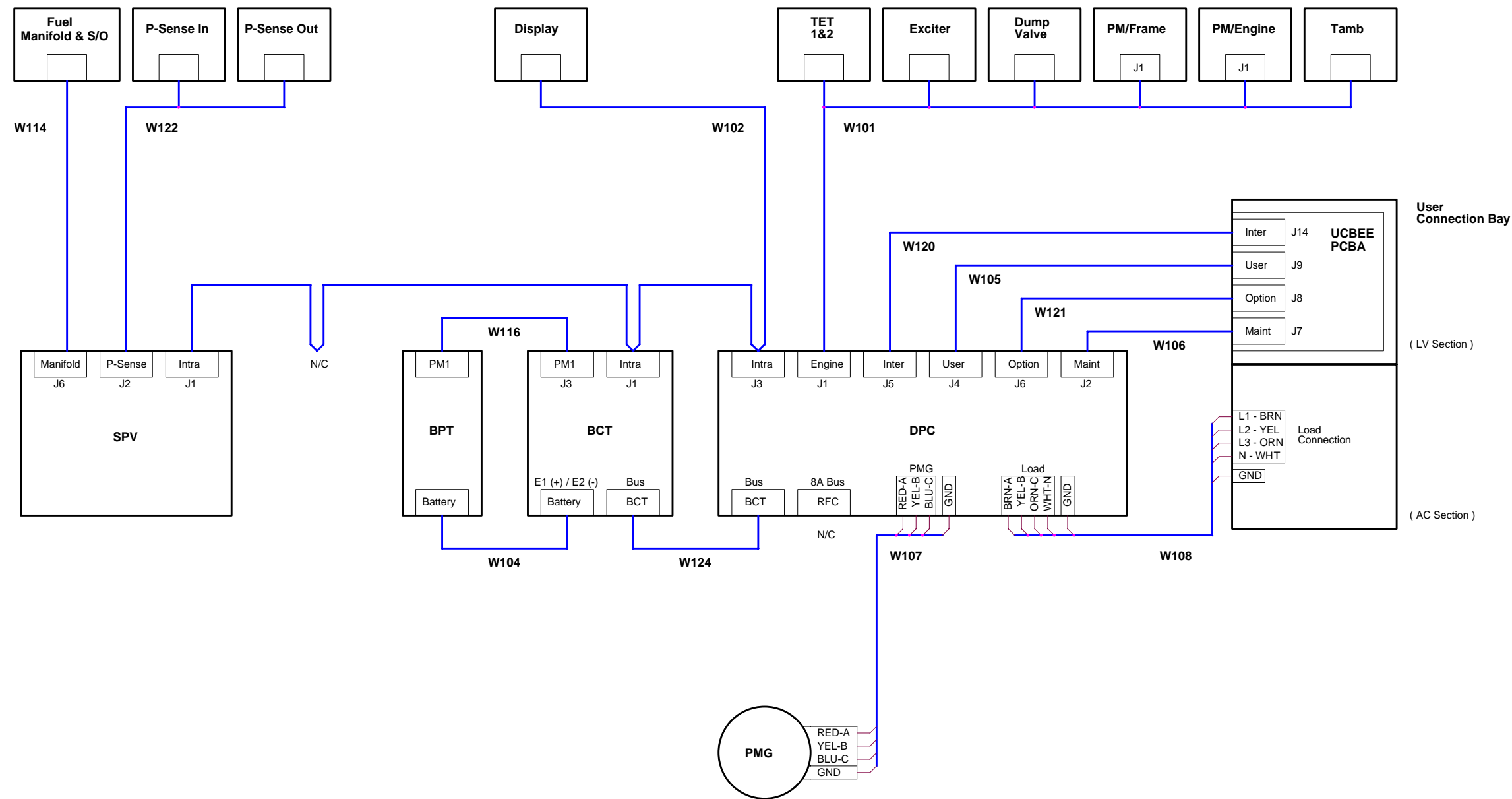
<b>Capstone Turbine Corporation</b> 2121 Northhoff Street Chattsworth, CA 91311		CONTRACT NO. APPROVALS DATE	
Title: Schematic, MOD C330 TLA - GC, 207, HP, HBTU, IND PKG, (CE)		DRFT K. Keller 8-28-01	CHRR D. Resh 8-28-01
Size: D	RLSR STAT.	Document Number 509826-011	ENGR K. Keller 8-28-01
Date: Friday, September 28, 2001	Sheet 1 of 1	Rev A	MATL K. Keller 8-28-01

**NOTICE**

THIS DOCUMENT CONTAINS INFORMATION WHICH IS BOTH CONFIDENTIAL AND PROPRIETARY TO CAPSTONE TURBINE CORP. NEITHER THIS DOCUMENT NOR THE INFORMATION CONTAINED HEREIN SHALL BE COPIED, DISCLOSED TO OTHERS OR USED FOR ANY PURPOSES BEYOND THE SPECIFIC PURPOSE FOR WHICH THIS WAS DELIVERED WITHOUT THE EXPRESS WRITTEN PERMISSION OF CAPSTONE TURBINE CORPORATION - ALL RIGHTS RESERVED

RELEASED

REVISIONS			
LTR	DESCRIPTION	DATE	APPROVED
A	PILOT RELEASE	9-28-01	K. Keller
B	ECO 102696	5-14-02	D. Resh

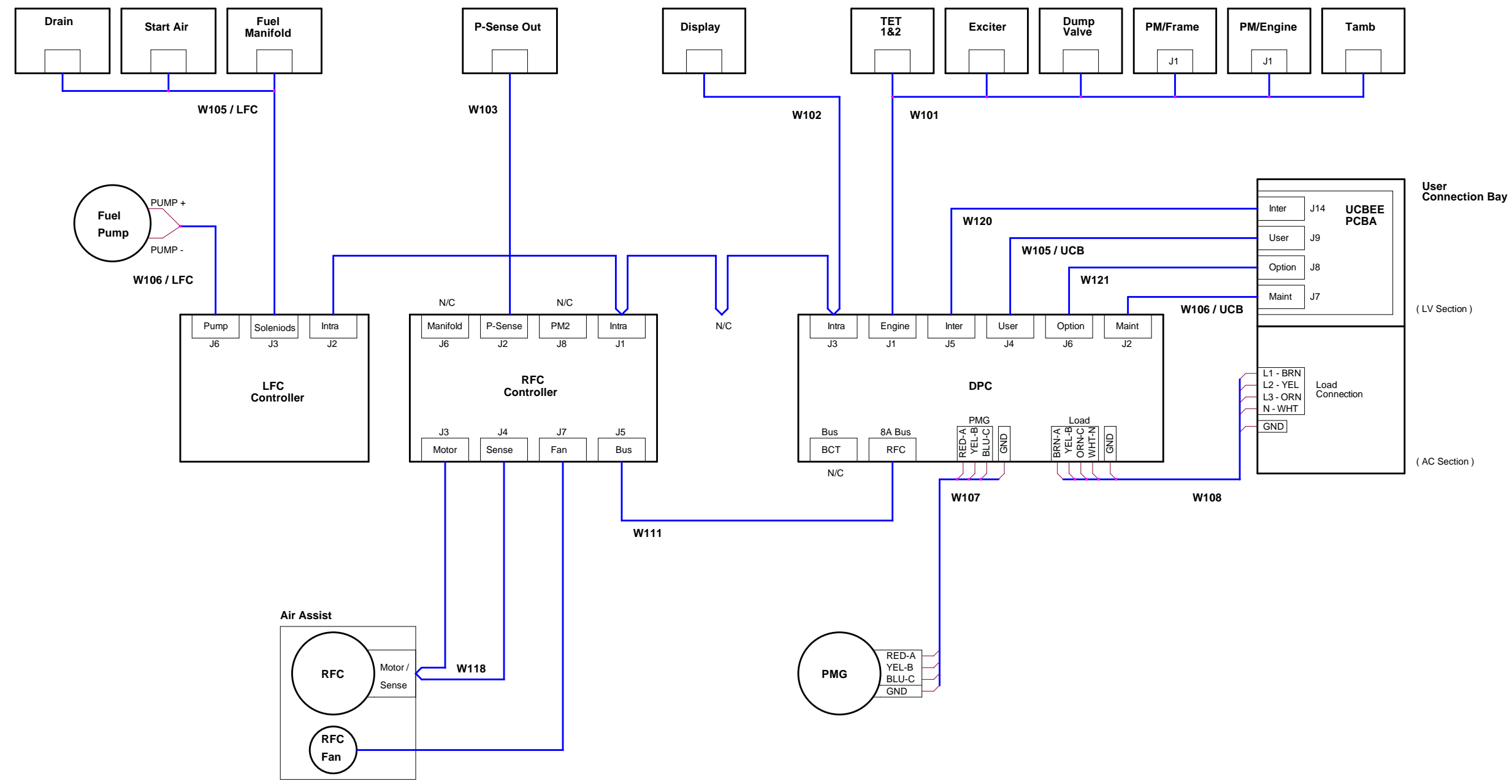


<b>Capstone Turbine Corporation</b> 21211 Nordhoff Street Chatsworth, CA 91311		CONTRACT NO. APPROVALS DATE	
Title: Schematic, MOD C330 TLA - SA, 20 <sup>th</sup> HP, HBTU, IND PKG, (C)		CHKR: D. Resh 9-28-01	ENGR: K. Keller 9-28-01
Size: D	FSCM: RLSF STAT.	Document Number: 509828-011	Rev: B MATL.
Date: Tuesday, May 14, 2002		Sheet: 1 of 1	

**NOTICE**  
 THIS DOCUMENT CONTAINS INFORMATION WHICH IS BOTH CONFIDENTIAL AND PROPRIETARY TO CAPSTONE TURBINE CORP. NEITHER THIS DOCUMENT NOR THE INFORMATION CONTAINED HEREIN SHALL BE COPIED, DISCLOSED TO OTHERS OR USED FOR ANY PURPOSES BEYOND THE SPECIFIC PURPOSE FOR WHICH THIS WAS DELIVERED WITHOUT THE EXPRESS WRITTEN PERMISSION OF CAPSTONE TURBINE CORPORATION - ALL RIGHTS RESERVED

REVISIONS			
LTR	DESCRIPTION	DATE	APPROVED
A	PILOT RELEASE	9-28-01	K. Keller

RELEASED

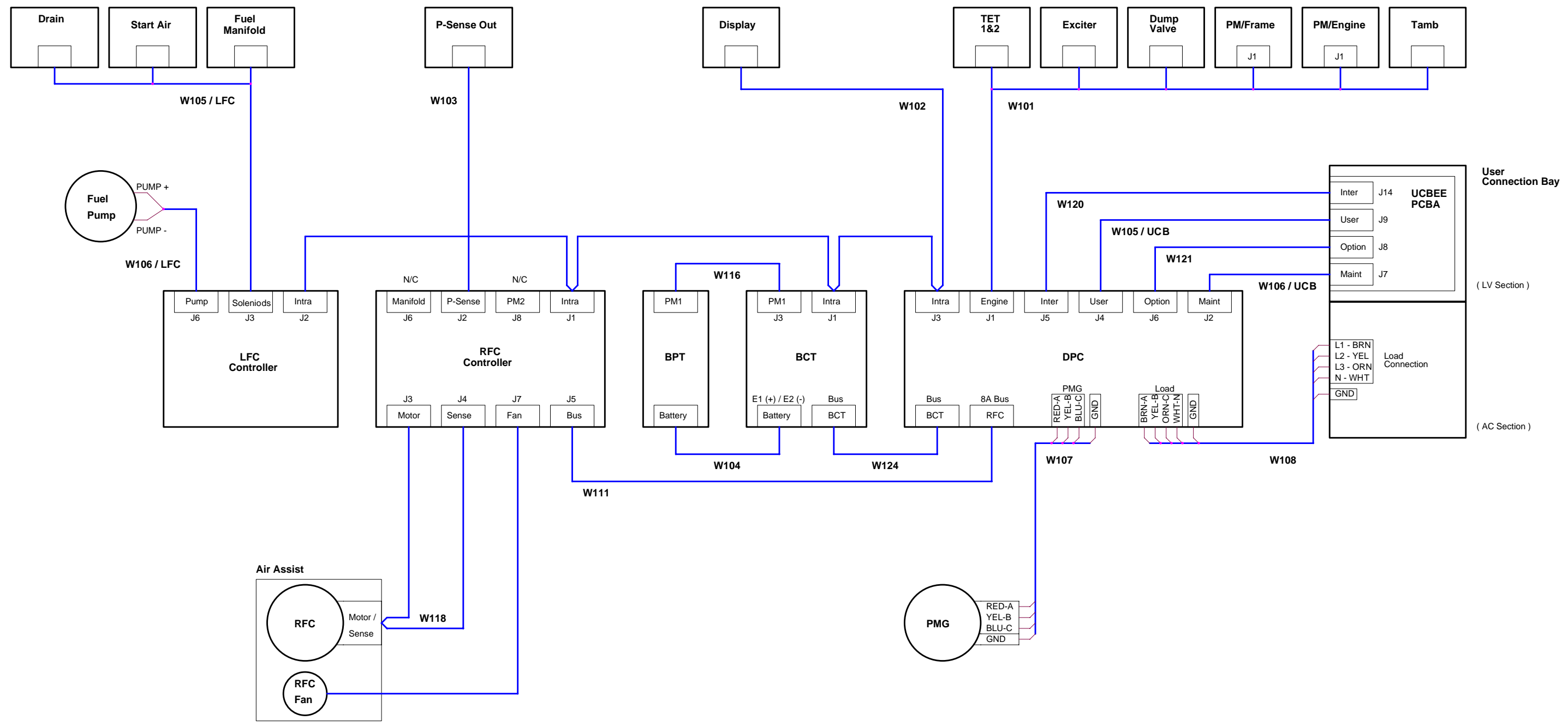


<b>Capstone Turbine Corporation</b> 2121 Northhoff Street Chatsworth, CA 91311		CONTRACT NO. APPROVALS DATE	
Title: Schematic, MOD C330 TLA, 20" ENG, GC-MP, LIQ, IND PKG (CE)		DRFT K. Keller 9-28-01	CHKR D. Reah 9-28-01
Size: D	RLSZ STAT.	Document Number: 509849-011	ENGR K. Keller 9-28-01
Date: Friday, September 28, 2001	Sheet: 1 of 1	Rev: A	MATL

**NOTICE**  
 THIS DOCUMENT CONTAINS INFORMATION WHICH IS BOTH CONFIDENTIAL AND PROPRIETARY TO CAPSTONE TURBINE CORP. NEITHER THIS DOCUMENT NOR THE INFORMATION CONTAINED HEREIN SHALL BE COPIED, DISCLOSED TO OTHERS OR USED FOR ANY PURPOSES BEYOND THE SPECIFIC PURPOSE FOR WHICH THIS WAS DELIVERED WITHOUT THE EXPRESS WRITTEN PERMISSION OF CAPSTONE TURBINE CORPORATION - ALL RIGHTS RESERVED

RELEASED

REVISIONS			
LTR	DESCRIPTION	DATE	APPROVED
A	PILOT RELEASE	9-28-01	K. Keller
B	ECO 102696	8-14-02	D. Resh



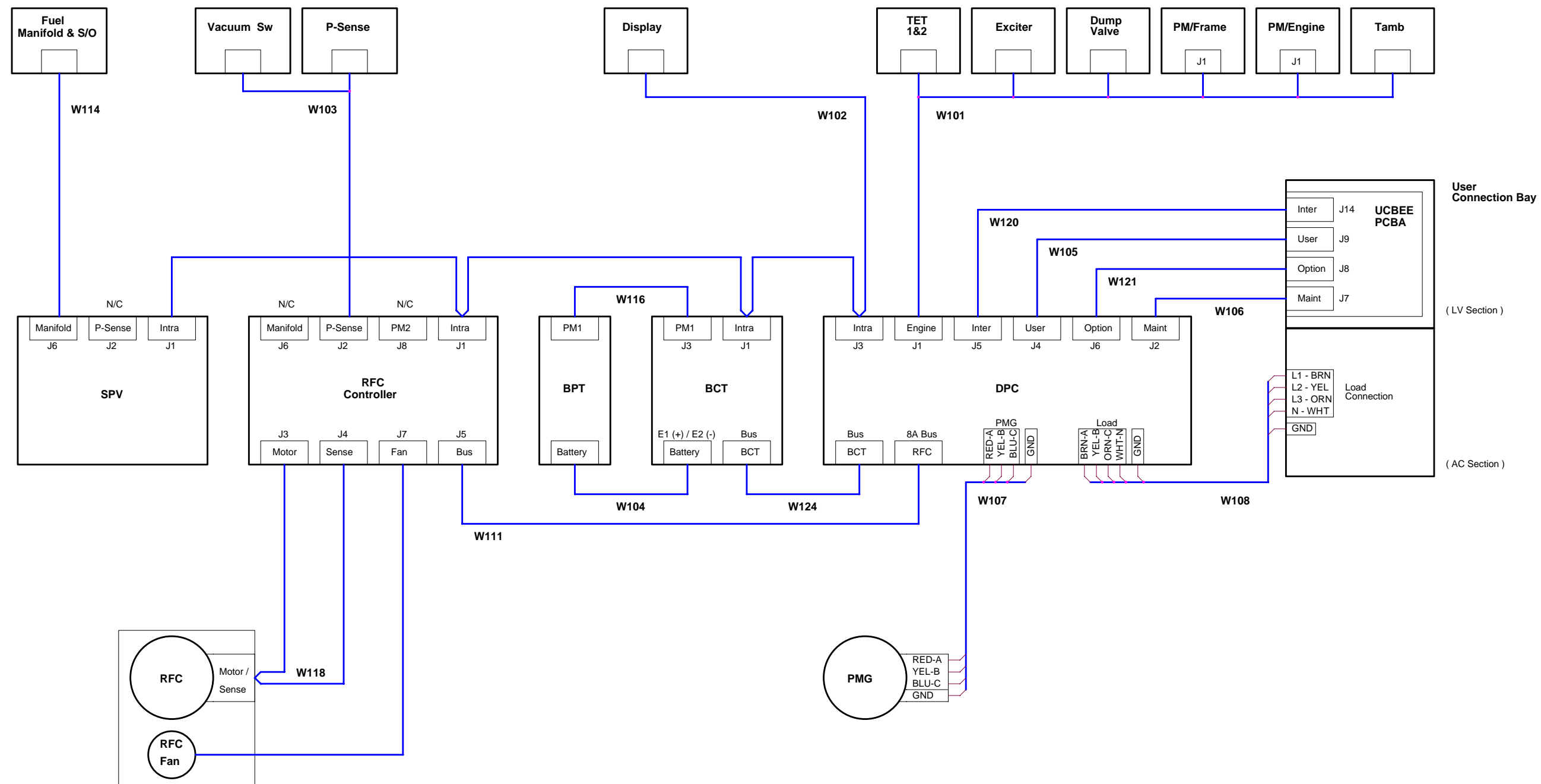
<b>Capstone Turbine Corporation</b> 21211 Nordhoff Street Chatsworth, CA 91311		CONTRACT NO. APPROVALS DATE	
Title: Schematic, MOD C330 TLA, 20° ENG, GC/SA-MPLIQ, INDPKG		CHDR ENGR MATL	K. Keller D. Resh K. Keller
Size: D	FSCM: RLSF STAT.	Document Number: 510403-011	Rev: B Date: Tuesday, May 14, 2002

**NOTICE**

THIS DOCUMENT CONTAINS INFORMATION WHICH IS BOTH CONFIDENTIAL AND PROPRIETARY TO CAPSTONE TURBINE CORP. NEITHER THIS DOCUMENT NOR THE INFORMATION CONTAINED HEREIN SHALL BE COPIED, DISCLOSED TO OTHERS OR USED FOR ANY PURPOSES BEYOND THE SPECIFIC PURPOSE FOR WHICH THIS WAS DELIVERED WITHOUT THE EXPRESS WRITTEN PERMISSION OF CAPSTONE TURBINE CORPORATION - ALL RIGHTS RESERVED

**RELEASED**

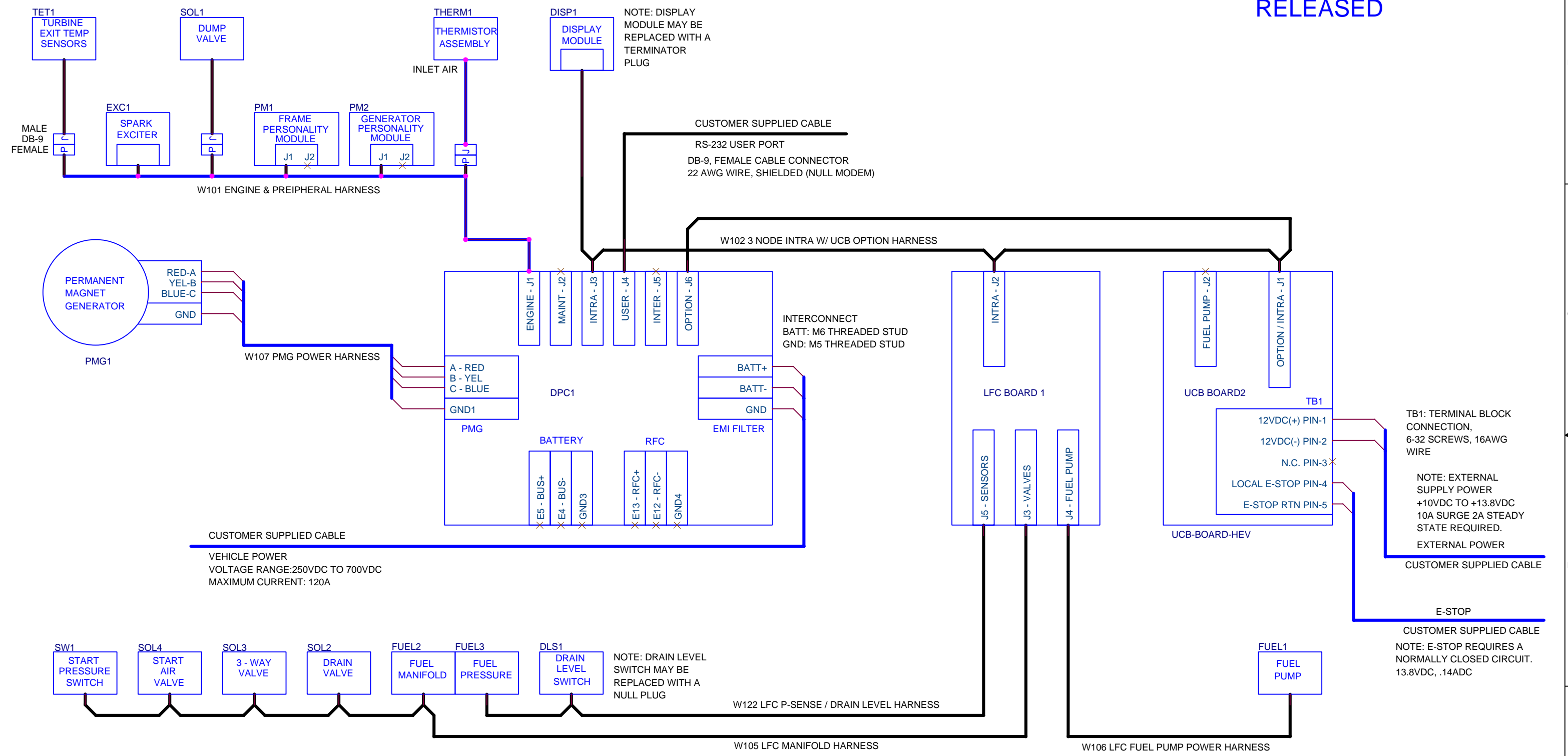
REVISIONS			
LTR	DESCRIPTION	DATE	APPROVED
A	PILOT RELEASE	8-21-01	K. Keller
B	ECO 102696	5-14-02	D. Resh



<b>Capstone Turbine Corporation</b> 21211 Nordhoff Street Chatsworth, CA 91311		CONTRACT NO. APPROVALS DATE	
Title Schematic, MOD C330 TLA, SA, LP-F, NG, CP, (CE)		CHKR D. Resh	DATE 8-21-01
Size D	FSCM RLSF STAT.	Document Number 512103-011	Rev B
Date Tuesday, May 14, 2002		Sheet 1 of 1	ENGR K. Keller
		MATL K. Keller	DATE 8-21-01

REVISIONS			
REV	DESCRIPTION	DATE	APPROVED
A	PILOT PRODUCTION RELEASE	7/29/02	C. NOSKI

RELEASED




CUSTOMER SUPPLIED CABLE  
 VEHICLE POWER  
 VOLTAGE RANGE: 250VDC TO 700VDC  
 MAXIMUM CURRENT: 120A

TB1: TERMINAL BLOCK CONNECTION,  
 6-32 SCREWS, 16AWG WIRE

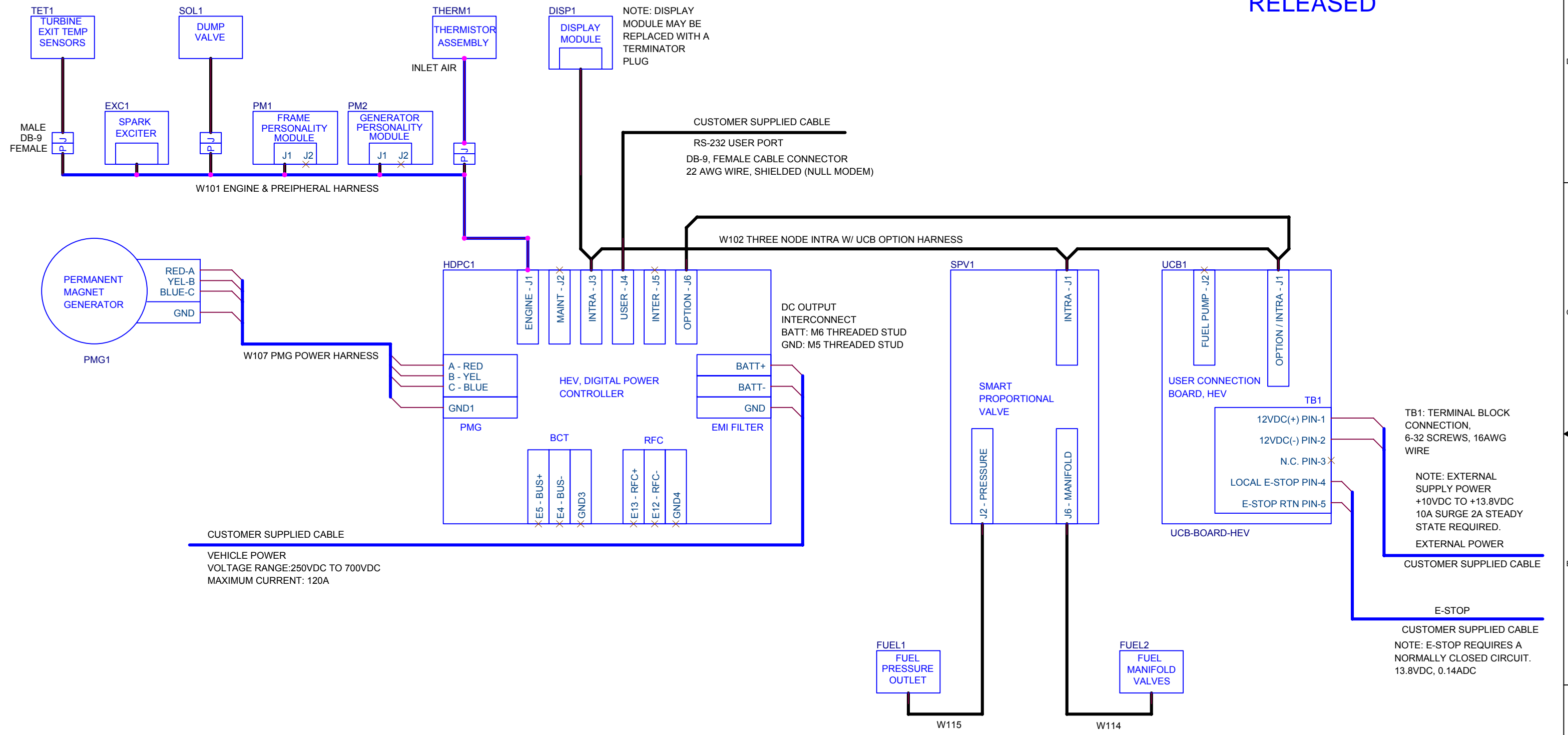
NOTE: EXTERNAL SUPPLY POWER  
 +10VDC TO +13.8VDC  
 10A SURGE 2A STEADY STATE REQUIRED.  
 EXTERNAL POWER

CUSTOMER SUPPLIED CABLE  
 E-STOP  
 NOTE: E-STOP REQUIRES A NORMALLY CLOSED CIRCUIT.  
 13.8VDC, .14ADC

CONTRACT NO.		 <b>Capstone Turbine Corporation</b> 21211 NORDHOFF STREET CHATSWORTH, CA 91311			
APPROVALS	DATE				
DRFT: C. NOSKI	7/29/02	Title <b>SCHEMATIC, MOD C30 TLA, HEV, HELOR</b>			
CHKR: D. RESH	7/29/02				
ENGR: K. KELLER	7/29/02	Size	FSCM	RLSE STAT.	Document Number
MAT'L:		B			514418-011
		Date:	Friday, August 23, 2002		Sheet 1 of 1


REV		REVISIONS	
REV	DESCRIPTION	DATE	APPROVED
A	PILOT PRODUCTION RELEASE	9/17/02	C. NOSKI

RELEASED



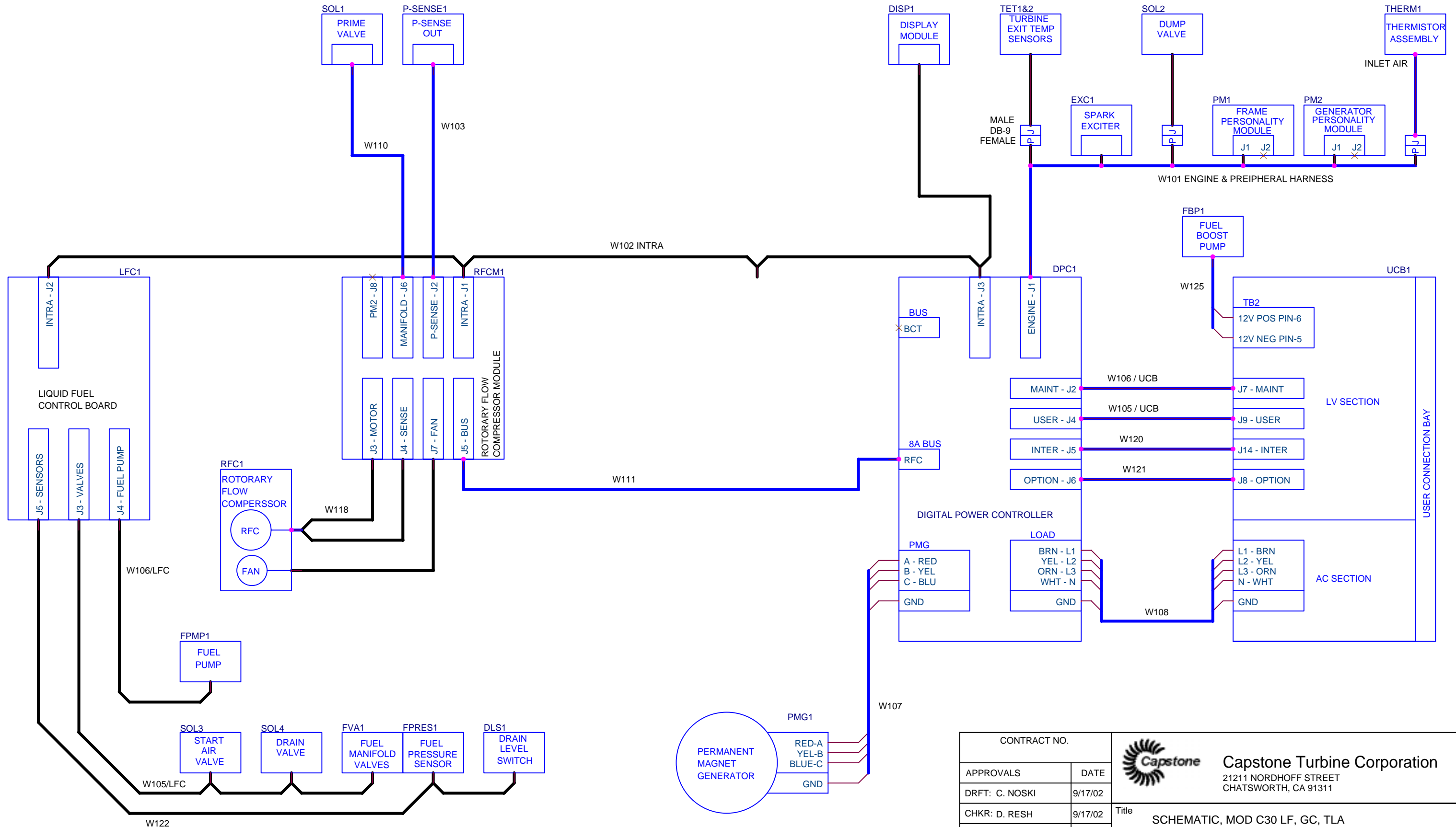
CUSTOMER SUPPLIED CABLE  
 VEHICLE POWER  
 VOLTAGE RANGE: 250VDC TO 700VDC  
 MAXIMUM CURRENT: 120A


TB1: TERMINAL BLOCK CONNECTION,  
 6-32 SCREWS, 16AWG WIRE  
 NOTE: EXTERNAL SUPPLY POWER  
 +10VDC TO +13.8VDC  
 10A SURGE 2A STEADY STATE REQUIRED.  
 EXTERNAL POWER  
 CUSTOMER SUPPLIED CABLE  
 E-STOP  
 CUSTOMER SUPPLIED CABLE  
 NOTE: E-STOP REQUIRES A  
 NORMALLY CLOSED CIRCUIT.  
 13.8VDC, 0.14ADC

CONTRACT NO.		 <b>Capstone Turbine Corporation</b> 21211 NORDHOFF STREET CHATSWORTH, CA 91311				
APPROVELS	DATE					
DRFT: C. NOSKI	9/17/02	Title <b>SCHEMATIC, MOD C30 HP HEV, TLA</b>				
CHKR: D. RESH	9/17/02					
ENGR: K. KELLER	9/17/02	Size B	FSCM	RLSE STAT.	Document Number 514691-011	Rev A
MAT'L:		Date: Tuesday, September 17, 2002	Sheet	1	of	1

RELEASED

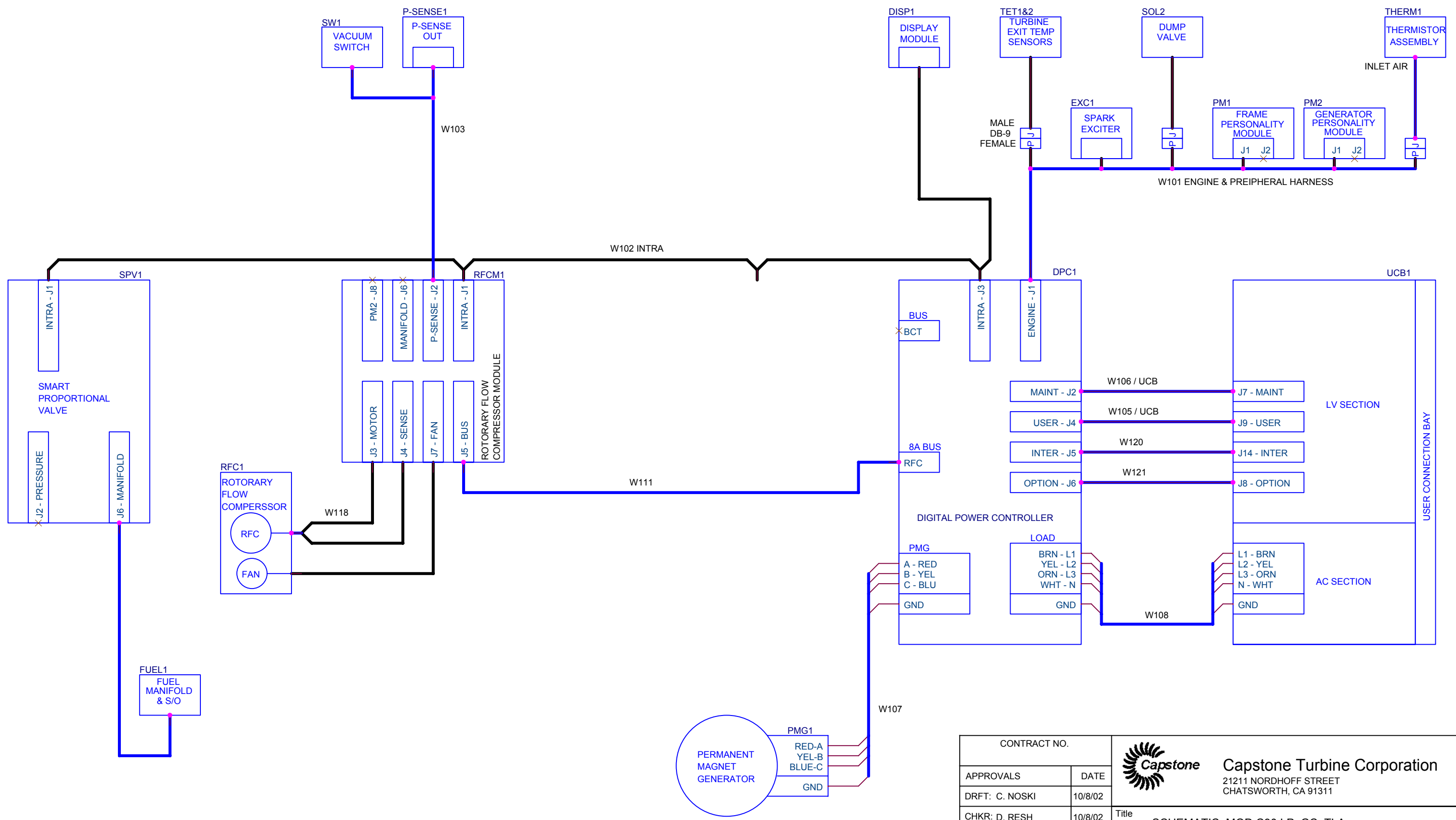
REVISIONS		DATE	APPROVED
REV	DESCRIPTION		
A	PILOT PRODUCTION RELEASE	9/17/02	C. NOSKI




CONTRACT NO.		 <b>Capstone Turbine Corporation</b> 21211 NORDHOFF STREET CHATSWORTH, CA 91311		
APPROVALS	DATE	Title <b>SCHEMATIC, MOD C30 LF, GC, TLA</b>		
DRFT: C. NOSKI	9/17/02			
CHKR: D. RESH	9/17/02	Size	FSCM	Rev
ENGR: K. KELLER	9/17/02	B	RLSE STAT.	A
MAT'L:		Document Number		
		514692-011		
Date: Thursday, September 26, 2002		Sheet	1	of 1

RELEASED

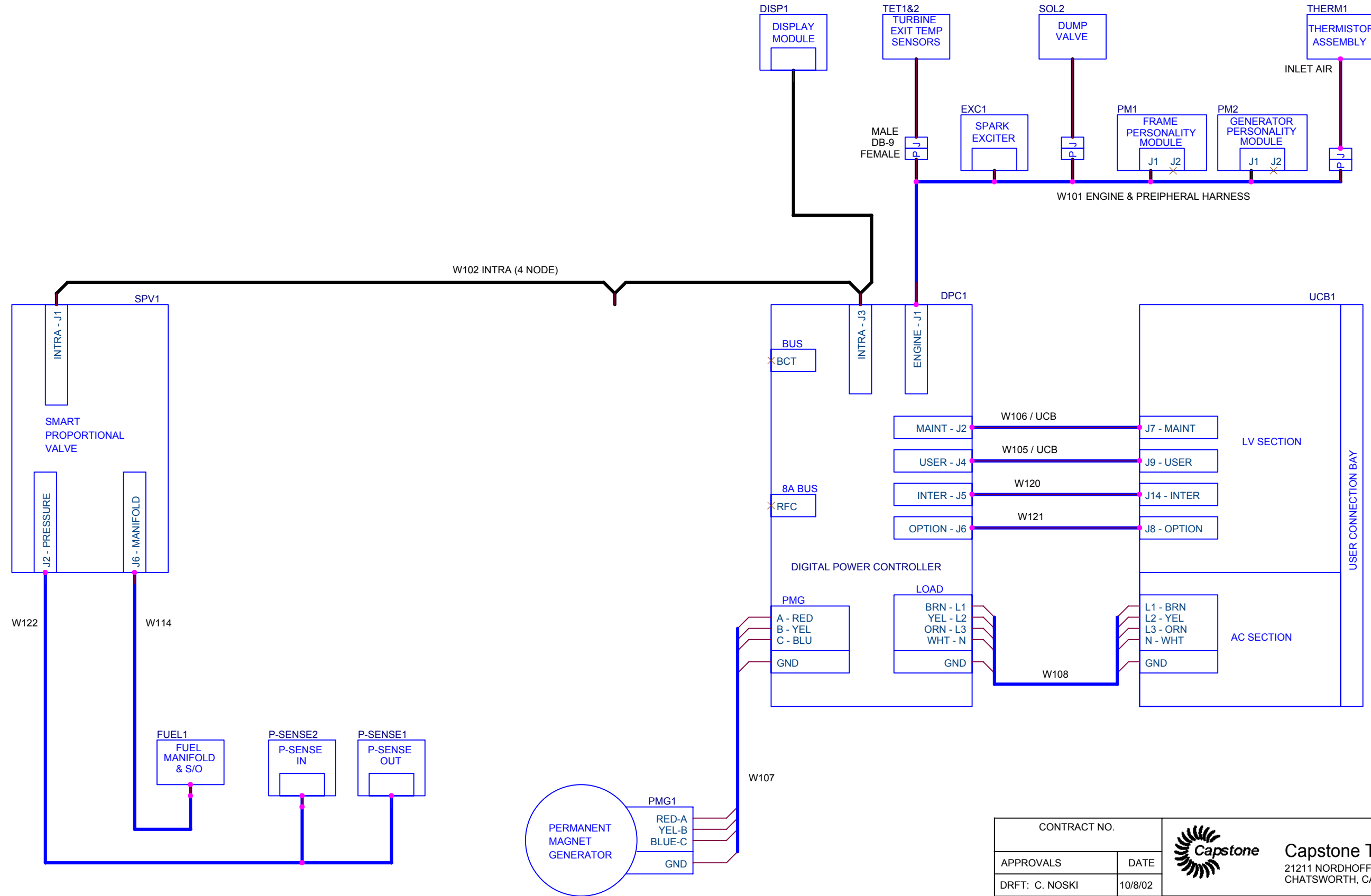
REVISIONS		DATE	APPROVED
REV	DESCRIPTION		
A	PILOT PRODUCTION RELEASE	10/8/02	C. NOSKI




CONTRACT NO.		 <b>Capstone Turbine Corporation</b> 21211 NORDHOFF STREET CHATSWORTH, CA 91311				
APPROVALS	DATE					
DRFT: C. NOSKI	10/8/02	Title <b>SCHEMATIC, MOD C30 LP, GC, TLA</b>				
CHKR: D. RESH	10/8/02					
ENGR: K. KELLER	10/8/02	Size	FSCM	RLSE STAT.	Document Number	Rev
MAT'L:		B			514760-011	A
Date: Tuesday, October 08, 2002		Sheet		1 of 1		

RELEASED

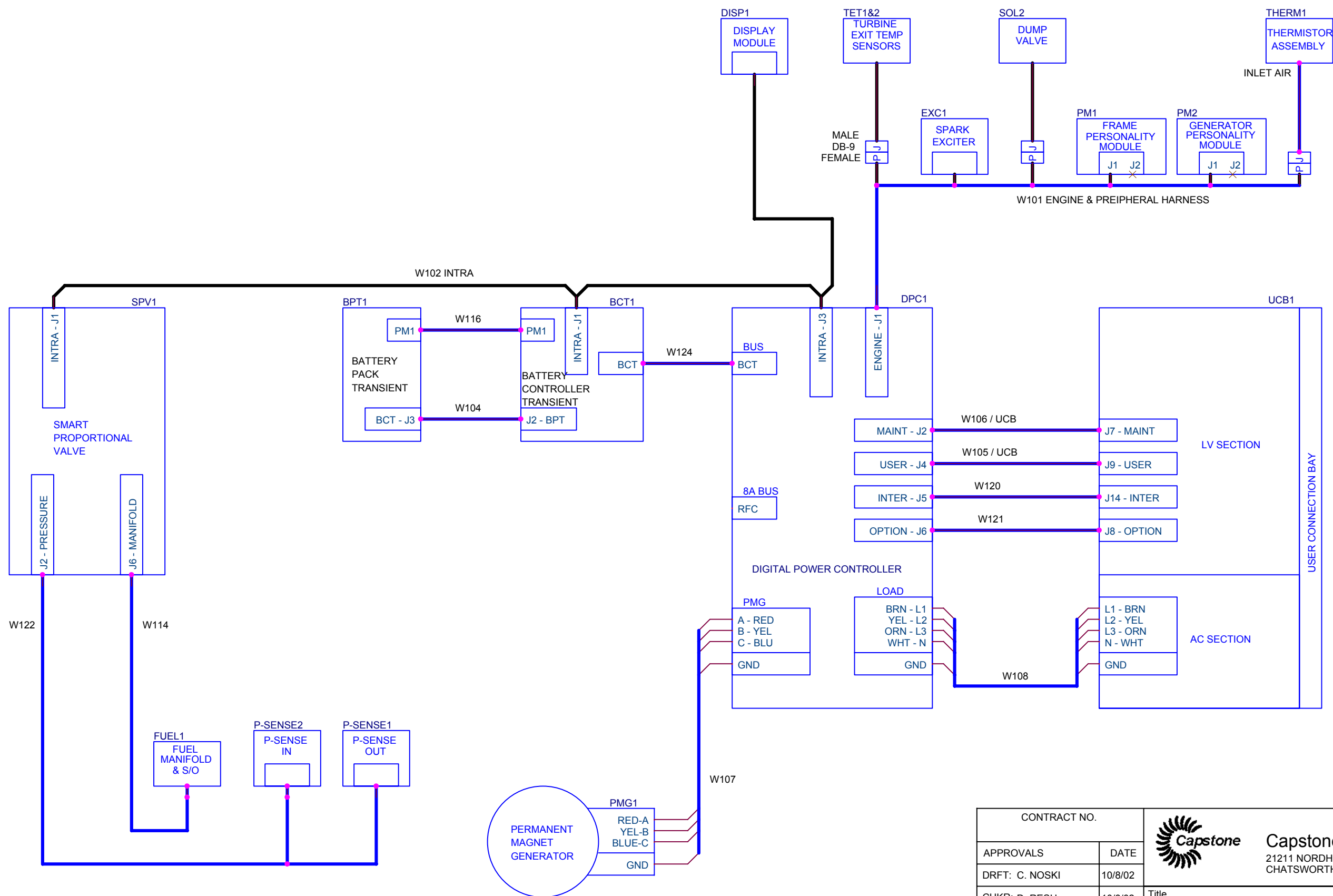
REVISIONS		DATE	APPROVED
REV	DESCRIPTION		
A	PILOT PRODUCTION RELEASE	10/8/02	C. NOSKI




CONTRACT NO.		 <b>Capstone Turbine Corporation</b> 21211 NORDHOFF STREET CHATSWORTH, CA 91311				
APPROVALS	DATE					
DRFT: C. NOSKI	10/8/02	Title <b>SCHEMATIC, MOD C30 HP, GC, TLA</b>				
CHKR: D. RESH	10/8/02					
ENGR: K. KELLER	10/8/02	Size B	FSCM	RLSE STAT.	Document Number 514761-011	Rev A
MAT'L:		Date: Tuesday, October 08, 2002		Sheet 1 of 1		

RELEASED

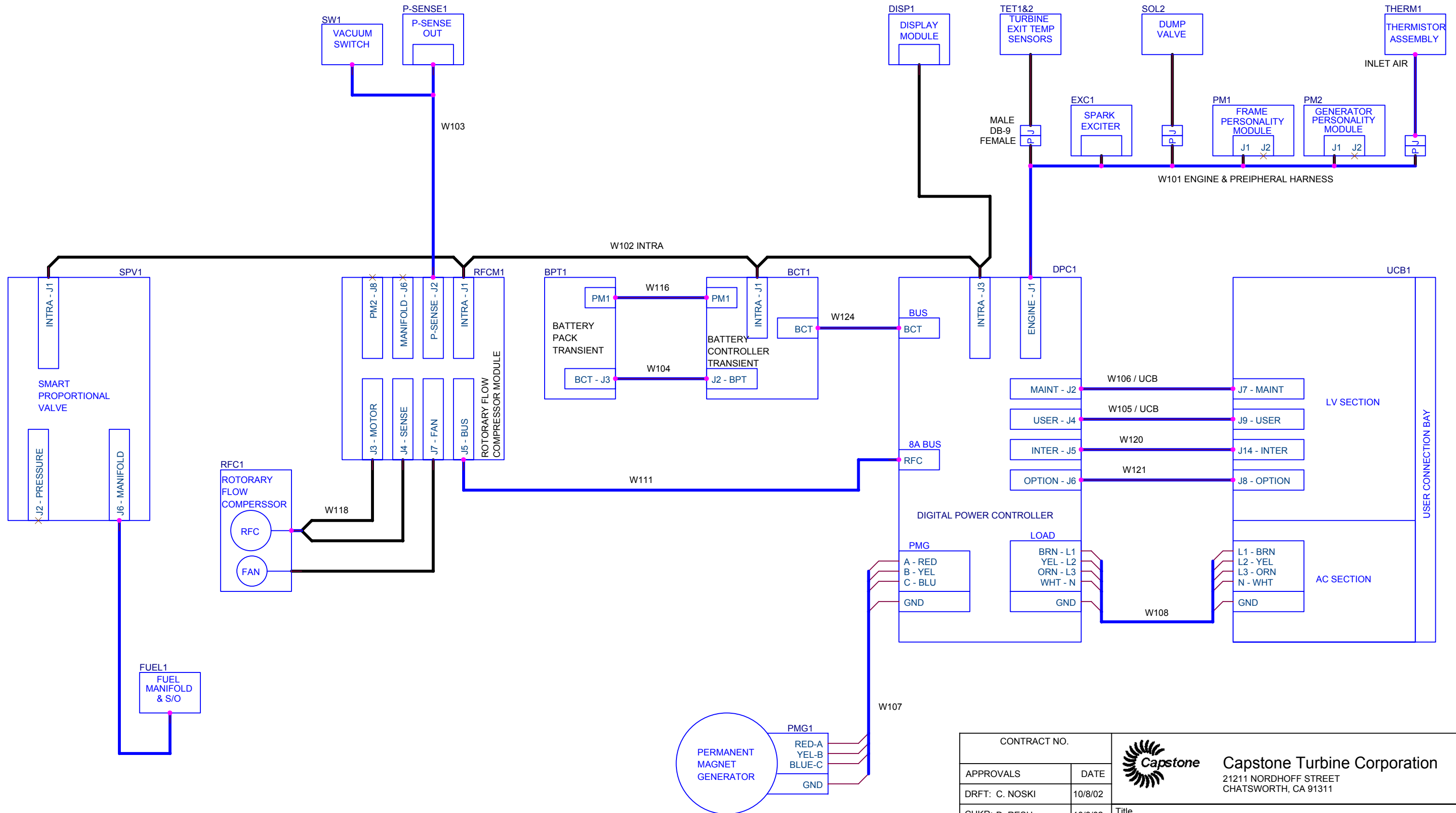
REVISIONS			
REV	DESCRIPTION	DATE	APPROVED
A	PILOT PRODUCTION RELEASE	10/8/02	C. NOSKI




CONTRACT NO.		 <b>Capstone Turbine Corporation</b> 21211 NORDHOFF STREET CHATSWORTH, CA 91311				
APPROVALS	DATE					
DRFT: C. NOSKI	10/8/02	Title: SCHEMATIC, MOD C30 HP, SA, TLA				
CHKR: D. RESH	10/8/02					
ENGR: K. KELLER	10/8/02	Size B	FSCM	RLSE STAT.	Document Number 514762-011	Rev A
MAT'L:		Date: Tuesday, October 08, 2002				Sheet 1 of 1

RELEASED

REVISIONS		DATE	APPROVED
REV	DESCRIPTION		
A	PILOT PRODUCTION RELEASE	10/8/02	C. NOSKI



CONTRACT NO.		 <b>Capstone Turbine Corporation</b> 21211 NORDHOFF STREET CHATSWORTH, CA 91311				
APPROVALS	DATE					
DRFT: C. NOSKI	10/8/02	Title <b>SCHEMATIC, MOD C30 LP, SA, TLA</b>				
CHKR: D. RESH	10/8/02					
ENGR: K. KELLER	10/8/02	Size	FSCM	RLSE STAT.	Document Number	Rev
MAT'L:		B			514770-011	A
Date: Tuesday, October 08, 2002		Sheet		1		of 1