

Technical Reference

Capstone Remote Monitoring System (User Edition)

This document presents the control and monitoring features for the User Edition Capstone Remote Monitoring System (CRMS) software.

Chapter 4: Program Mode

This chapter presents the Program Mode information for CRMS operation.

The CRMS program can operate in two different control modes: (1) Monitoring Mode, and (2) Control Mode.

In the Monitoring Mode, no control or parameter changes are allowed, nor are any changes to settings allowed. However, in the Control Mode, full control is allowed.

The program mode is User-Selectable. The User may change the program mode by selecting the appropriate control from the Windows Tool Bar Menu.

CRMS always opens in the Monitoring Mode. Notice however, that after a period of ten minutes of inactivity, the program switches from the Control Mode to the Monitoring Mode. This particular feature is applicable only to the User and Maintenance versions of CRMS.

The Monitoring Mode is displayed on the Window Menu Bar with a green background color, as shown in Figure 4-1.

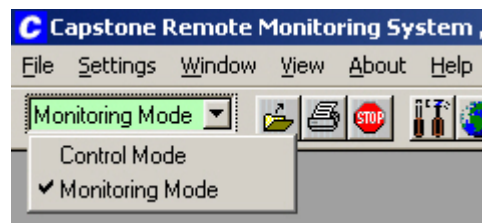


Figure 4-1. Monitoring Mode Display

The Control Mode is displayed in a similar manner, except with a red background color.

Notes and Related Information